

BMW 5 Series F10/F11(2010-2017)INSTALLATION GUIDANCE

⚠ Note: before installation, need to take off the key first , NEVER make installation with power on; during work, Put unnecessary cables protected with tapes , NOT expose wires outside to avoid shortcircuit.



1. Pry up AC vent panel.



2. Unscrew the screws of original screen and CD .



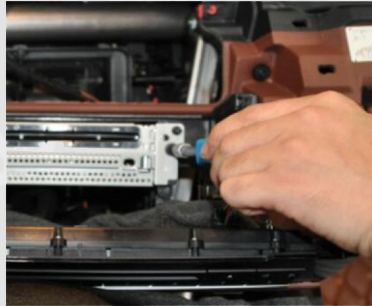
3. Take off the screen.



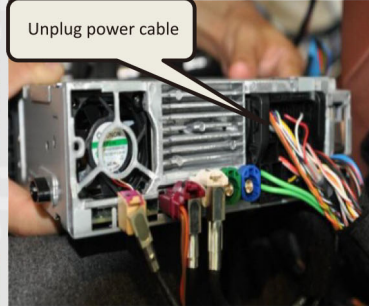
4. Pry up original CD panel.



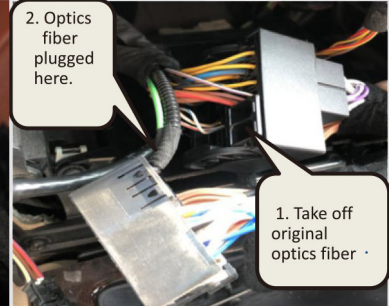
5. Unplug the wire of original CD panel and take off panel.



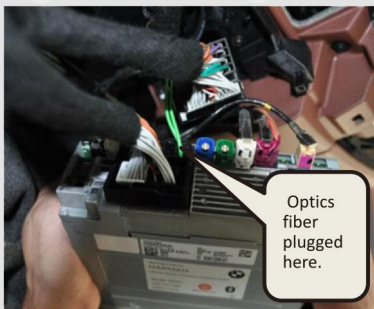
6. Unscrew 2 screws beside CD and take out CD.



7. Unplug power cable on CD.



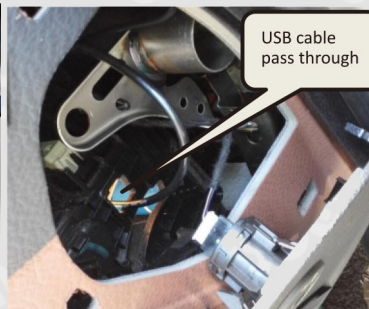
2. Optics fiber plugged here.
1. Take off original optics fiber .
8. Connect power cables together, plug original power cable into the female socket of android power cable. NOTE: Original optics fiber cable move to android male plug at same position.



9. Plug power cable into original CD.



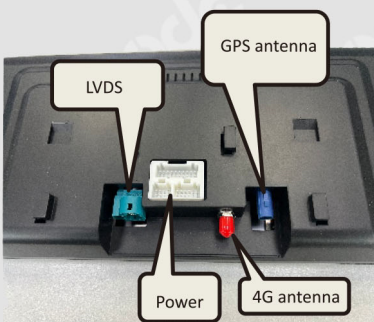
10. Put USB cable into container, bring cable passing through right SRS cover, Note: Fix SRS cover by tape, not unplug flat cable, or else SRS fault code will show up.



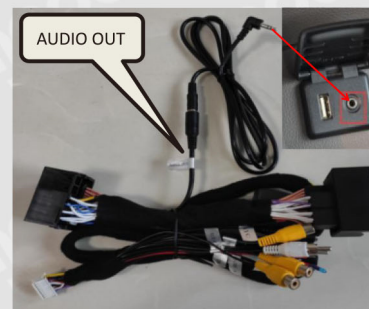
11. Put USB cable into container, and put SRS cover back .



12. Plug the cable of original CD panel, put panel and CD back, don't screw it now.



13. Connect original LVDS cable to unit LVDS port, plug power cables of android unit, Note: GPS antenna installed onto the rear window for better signal.



14. Power on car, check if android unit has sound or not, if it has sound, no need to check next step, if no sound, please connect "Audio out" cable into AUX input, to check sound, in factory settings, choose "Aux switching mode" to "Manual" and select "Aux" in original radio, then switch to android for sound.



15. Put back CD panel, AC vent trim and android unit, screw up and finish installation.



16. if install a 12.3inch screen, please put plastic stand back to original screen place, fix it with screws and wiring android screen and buckle up.



17. Put back CD panel, AC vent trim and android unit, screw up and finish installation.



12.3inch screen after-installation

10.25inch screen after-installation

BMW X1 E84 (2009-2015) INSTALL GUIDANCE

Note: There is a electronic PDF user manual in APPS, the app name is "Adobe Acrobat". please check it for operations and trouble shooting.



Before installation: E84 X1 with original screen (CIC).



Before installation: E84 X1 without original screen.



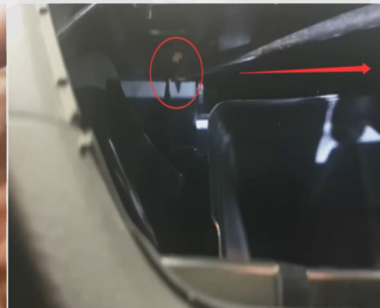
1. Use crowbar to prize up the decorative part of A/C vent



2. Take off A/C vent.



3. Take the flat cable out from emergency light key.



4. Remove 2 screws below car storage compartment or screen display.



5. Remove storage compartment. Note: It is similar dismantling way for X1 with screen)



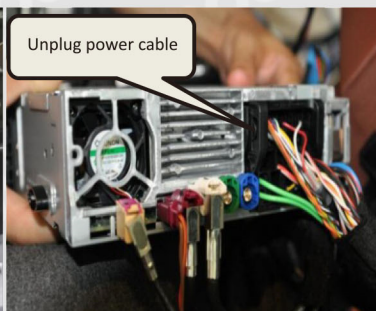
6. Use crowbar to prize up decorative frame of A/C panel.



7. Use crowbar to prize up A/C panel and take off flat cable.

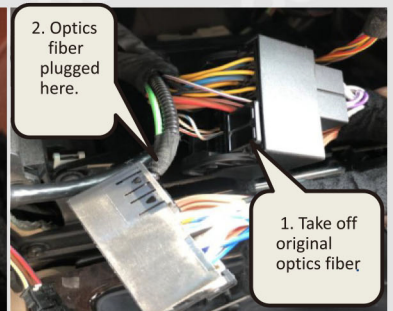


8. Take off the two screws below original CD and pull original CD out.



Unplug power cable

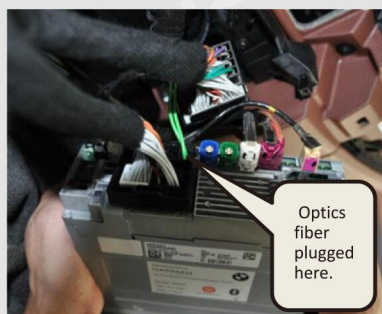
9. Unplug power cable on CD.



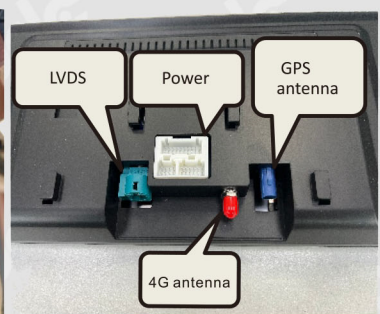
2. Optics fiber plugged here.

1. Take off original optics fiber

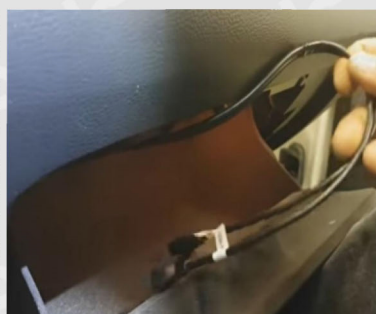
10. Connect power cables together, plug original power cable into the female socket of android power cable. NOTE: Original optics fiber cable move to android male plug at same position.



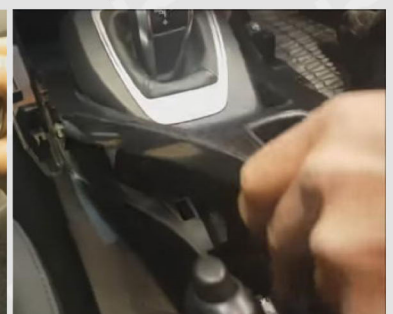
11. Plug android main cable into original CD.



12. Connect original LVDS cable to screen LVDS port, plug power cables of android unit, Note: GPS antenna can be put near the rear windscreen.



13. Pull USB cable via glove box in passenger seat.



14. Take original knob decorative frame out. (if there is original iDrive knob in car, forget this step)



15. Take this box away and put android iDrive knob controller back. (if there is original iDrive knob in car, forget this step)



16. The effect picture after idrive knob installed.



17. The effect picture for comparison.



18. Put the original CD, A/C vent back and screw up, installation finish.